

92

86

80

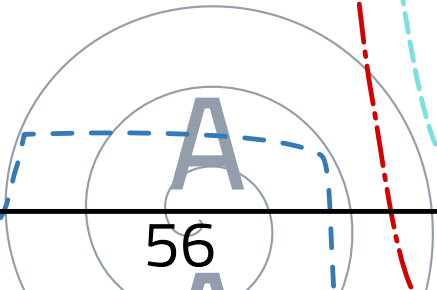
74

68

62

56

Kontrollkästchen  
2 x 2 cm

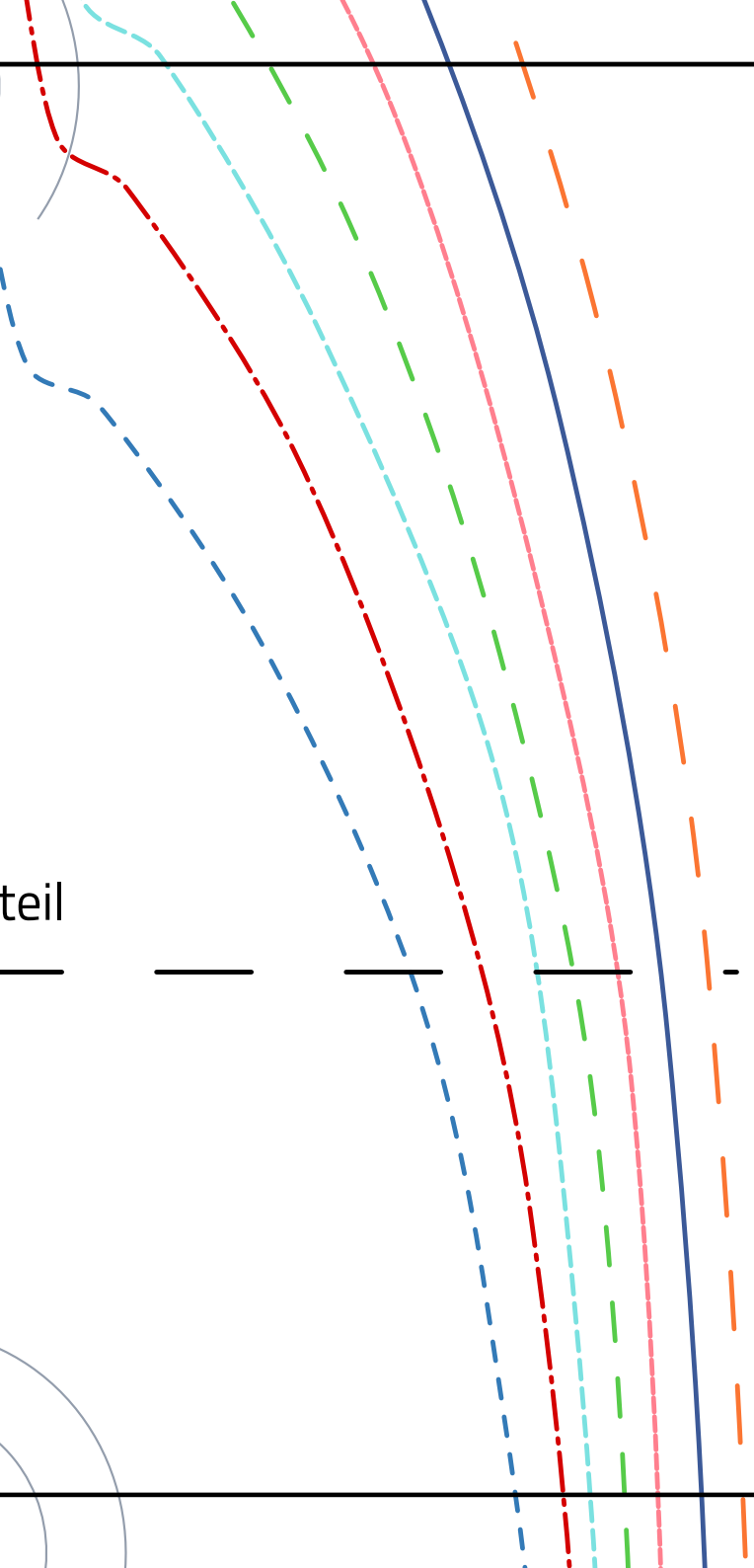
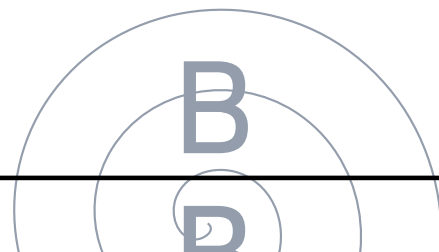
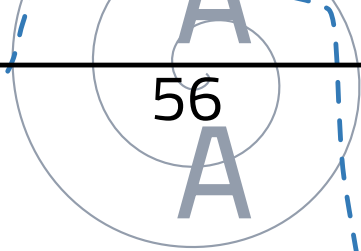


# Overall sunny LEON

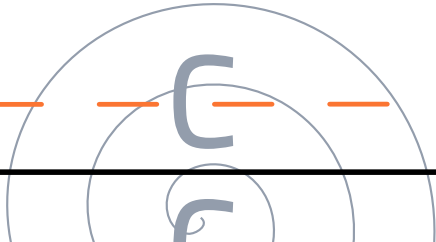
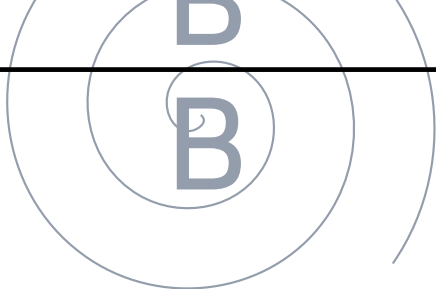
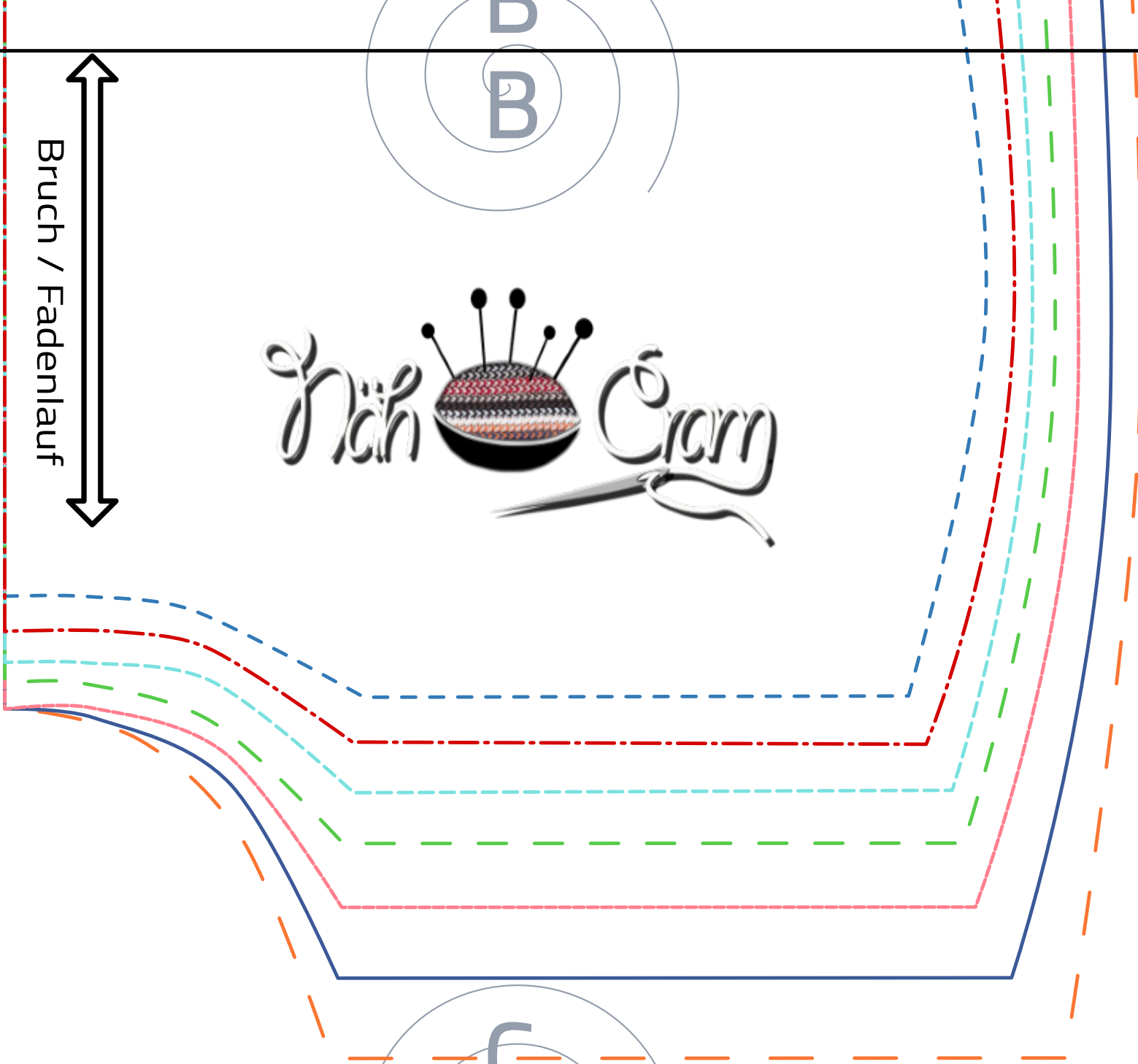
optionale Teilung Vorderteil

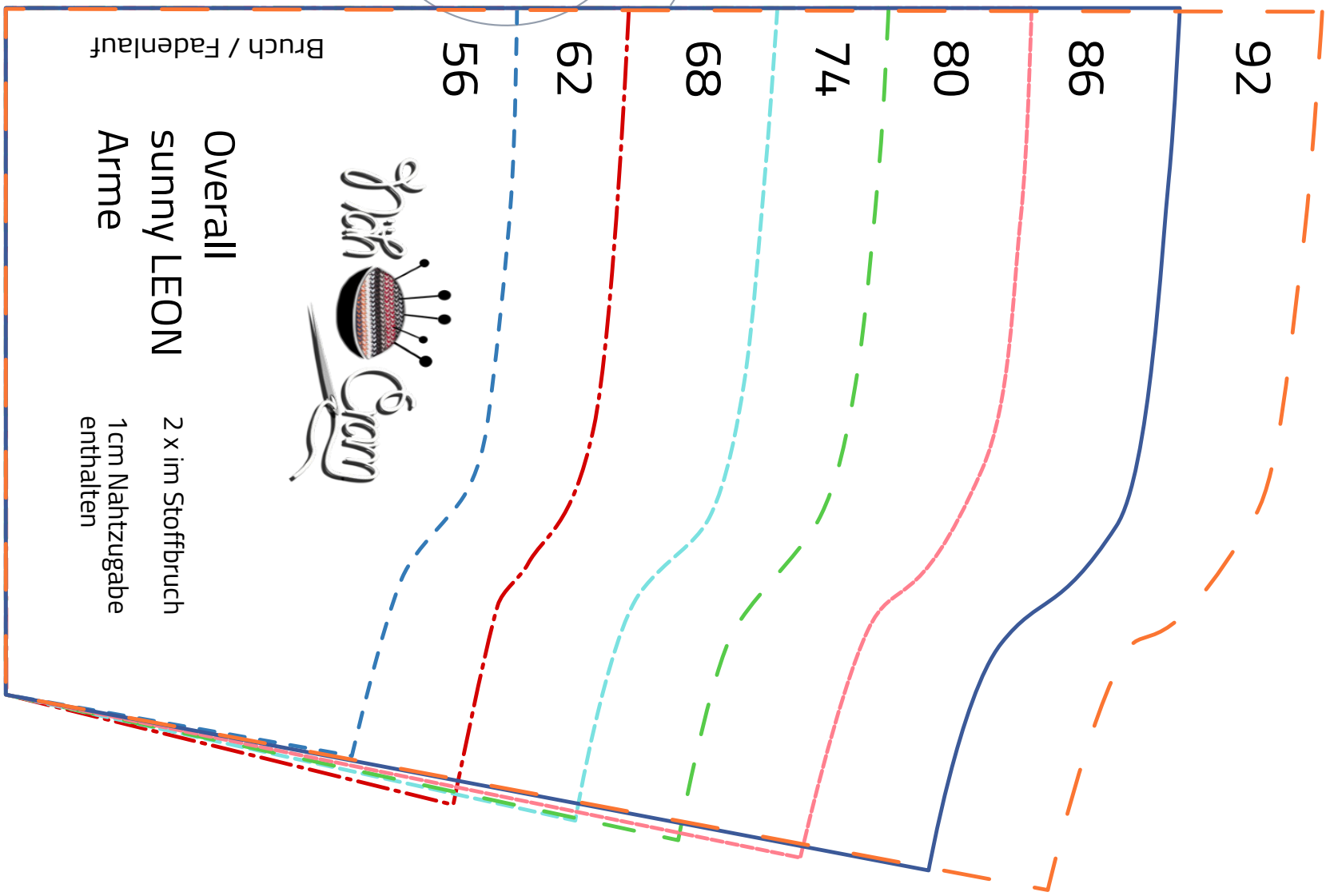
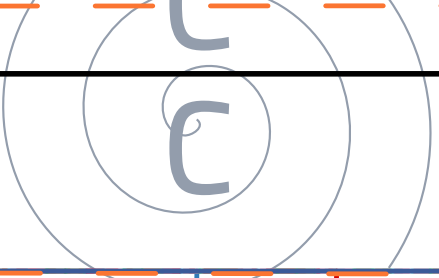
2 x im Stoffbruch

1cm Nahtzugabe  
enthalten



Bruch / Fadenlauf





Overall  
sunny LEON  
Arme  
2 x im Stoffbruch  
1cm Nahtzugabe  
enthalten

Bruch / Fadenlauf